

CoastWalk Oregon 2019

NORTH COAST LAND CONSERVANCY

DAY 1 • Friday 9/13

MEET: 7:30 a.m.

Kiawanda Community Center
34600 Cape Kiwanda Drive,
Pacific City

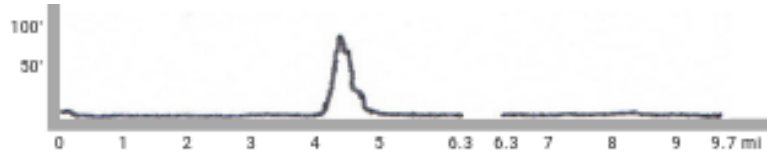
MILE 0: From parking area at Sitka Sedge State Natural Area, walk west on trail, following pink arrows at all junctions. At ocean beach, head south.

MILE 4: At Cape Kiwanda, continue south up steep sand hill to top of saddle; look for pink flag showing the route back down to the beach. **Do not venture west past fencing on top of headland.**

MILE 4.6: Restrooms available at top of Cape Kiwanda parking area, at yellow beach access sign 37.

MILE 6.2: At beach access sign 37B, leave the beach and follow sand trail 0.1 mile over the dune and down to day use parking area and midpoint refreshment stop at Bob Straub State Park. Board shuttle bus.

DAY 1 ELEVATION PROFILE



MILE 6.3: Bus will drop off at Wi-Ne-Ma beach access (no toilets here). Walk beach south.

MILE 9.2: Leave beach at beach access sign 39A. At top of bluff, turn right and follow neighborhood streets to Neskowin State Wayside at MILE 9.7. Board return shuttle bus.

NESKOWIN

END

PRELIMINARY MAP; FINAL MAP WILL BE PROVIDED AT CHECK-IN.

